



# CS Traffic Flow



- No use of elevator except disabled or heavy equipment
- **One way traffic**
  - Enter through the door from the Engineering Key side (East)
    - Up to 2<sup>nd</sup> floor or 3<sup>rd</sup> floor
    - Walk from east to west
    - Exit from the door to the dean's office area
- **To walk from 2<sup>nd</sup> floor to 3<sup>rd</sup> floor**
  - Walk down to ground floor
  - Exit the building
  - Enter the building from Engineering Key
  - Walk up to 3<sup>rd</sup> floor
- **To walk from 3<sup>rd</sup> floor to 2<sup>nd</sup> floor** – exit the building and enter from East up to 2<sup>nd</sup> floor



# 2<sup>nd</sup> Floor Engineering Building



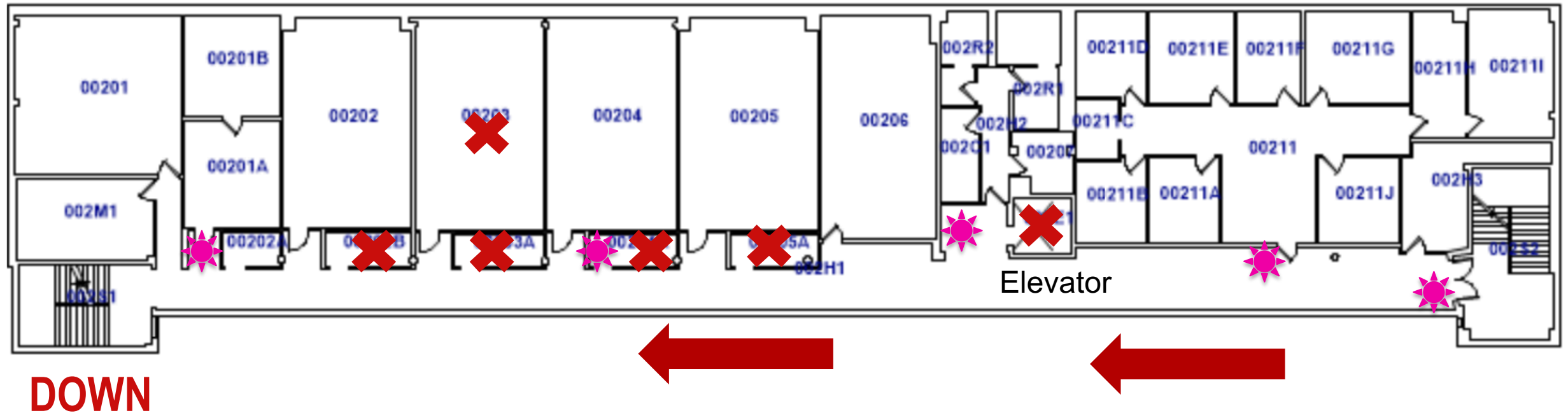
 Sanitization Station

 Inaccessible Area

**ENTER**

**EXIT**

**UP**




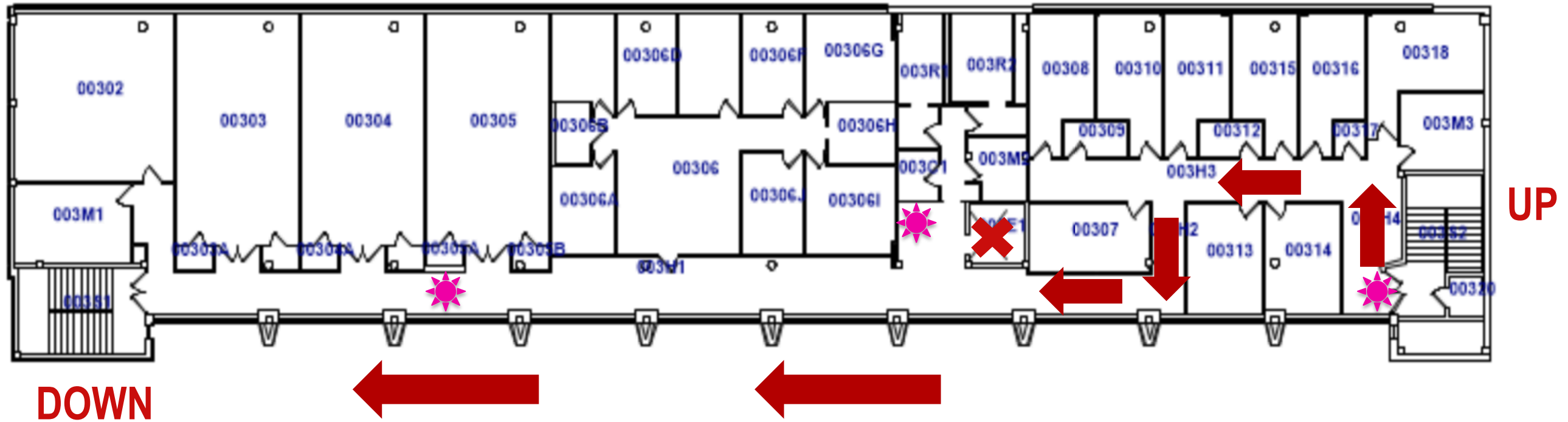


# 3<sup>rd</sup> Floor Engineering Building



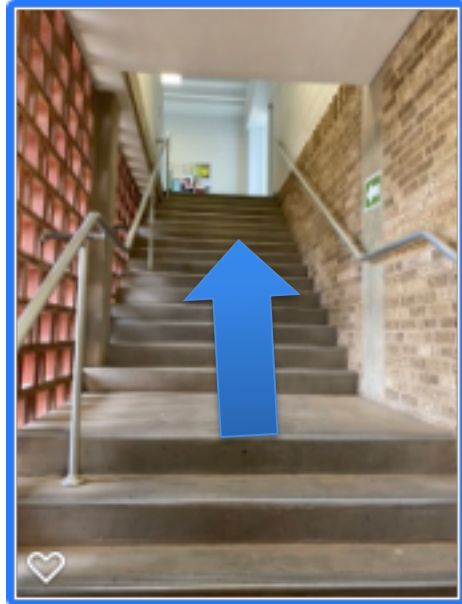
 Sanitization Station

 Inaccessible Area



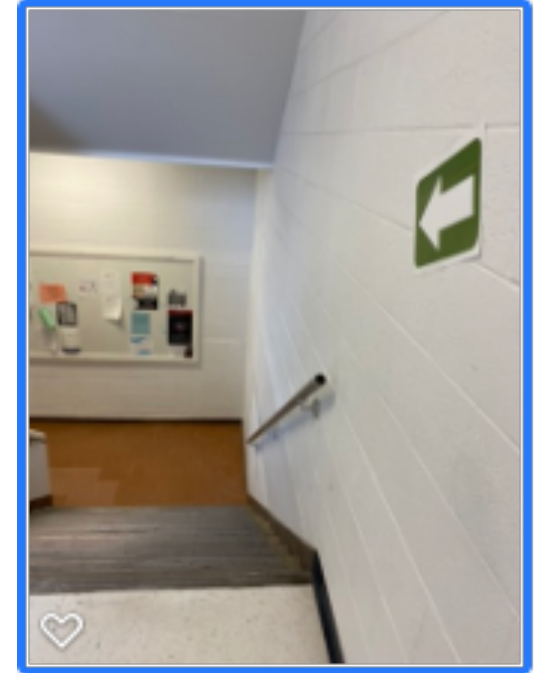
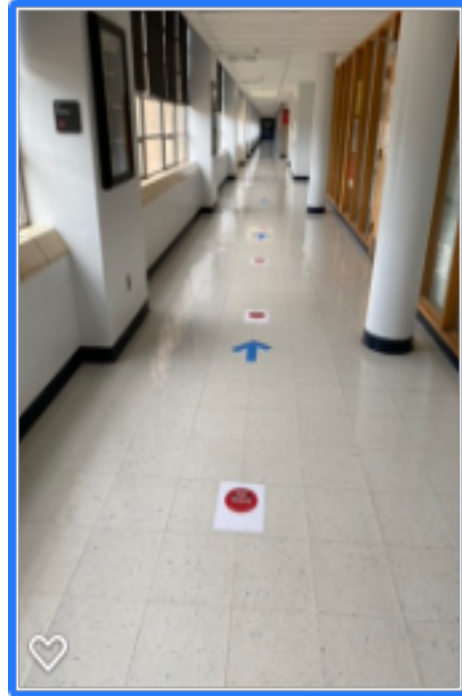
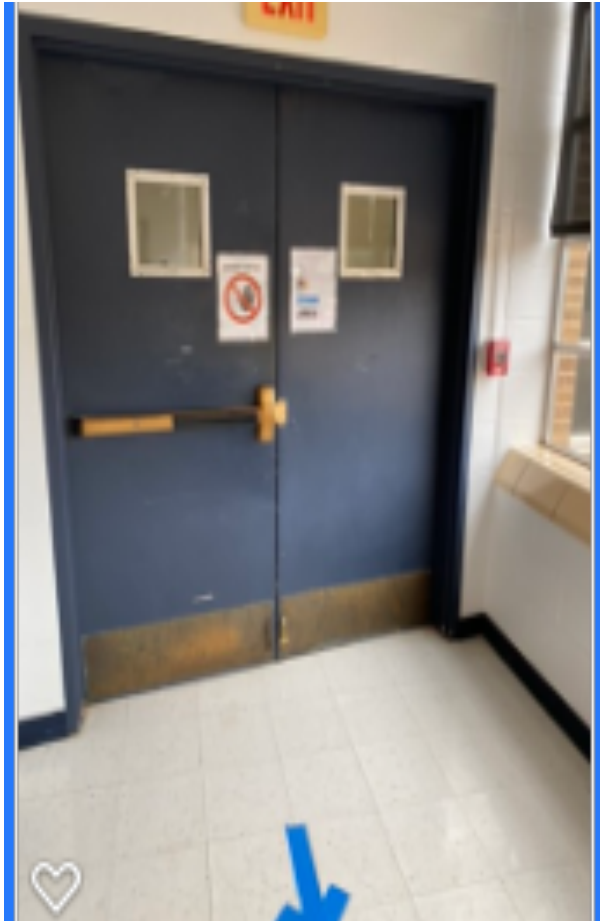


# Ingress from Ground Floor



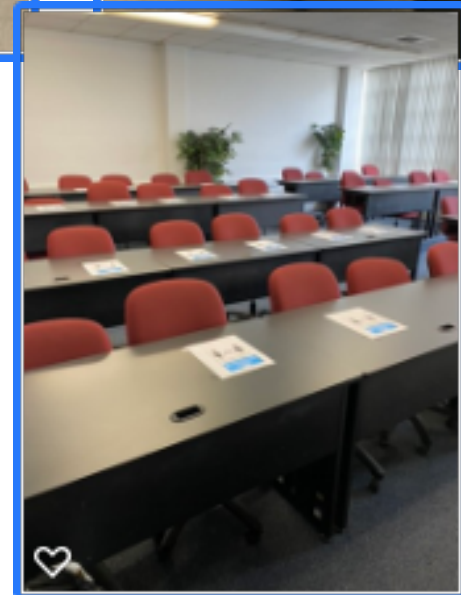
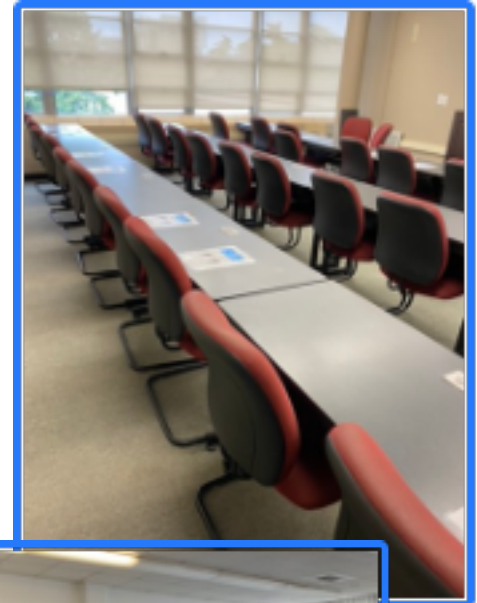
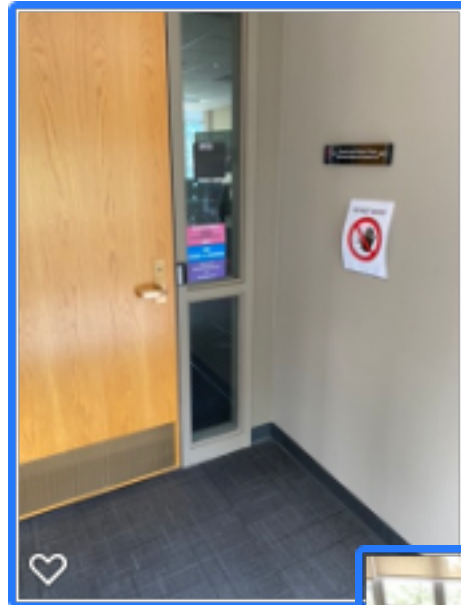


# Egress from 2<sup>nd</sup> Floor





# 2<sup>nd</sup> Floor



**Lock 211, 206, 203**



# 3<sup>rd</sup> Floor



**Lock 306**